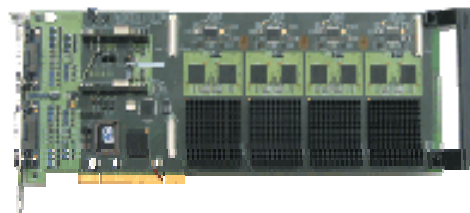


# EMS Vigilant-X Series

## Quad Screen Graphic Controller For High-End Data & Video Walls Applications



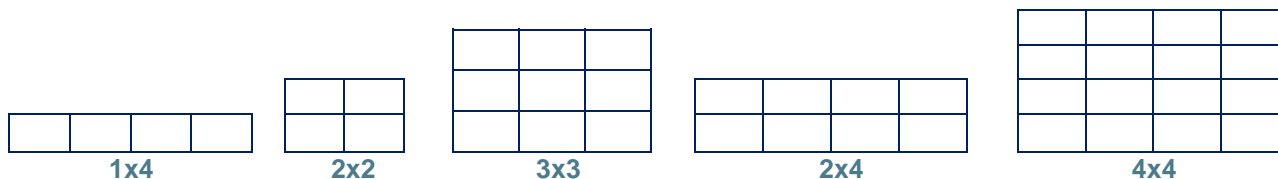
Advanced  
Imaging Technology



The EMS Vigilant-X range of PCI graphics adapters offers the ultimate solution for high-end video and data wall applications. The new Vantage4 provides the highest performance graphics processing with low power operation allowing up to a maximum of sixteen cards in a single PC.

The Vigilant-Xplus offers a low cost option for video overlays, providing one overlay per display channel and an on-board 16 x 8 video matrix switch. The Vigilant-XSQ also provides one video overlay processor per display channel combined with 256Mb of overlay memory, supporting up to sixteen overlay windows per display channel with triple buffering.

The entire video wall acts as a virtual Windows desktop, hence any application can be executed and placed anywhere on the video wall, either per screen, combination of screens or maximized to all screens. If larger screen configuration is required then simply add another Vigilant card, to a maximum of 8 cards. The video wall can comprise of Plasma/LCD/Projectors or CRT monitors.



### Models

Vigilant-X	Quad channel Graphics Controller, desktop expansion only to 64 screens.
Vigilant-Xplus	as above with 4 external video overlays, requires the VIM16 module
Vigilant-XSQ	As Vigilant-X, but requires the Avant-SQ16 overlays card/s, supporting up to 128 video channels by using multiple Avant-SQ16 cards.,

### Application Areas

- Retail Outlets
- Education
- Buses/Trains/Airports
- Businesses
- Restaurants & Clubs
- Security/Surveillance

**\*\* Basically anywhere that you need a large screen display**



# EMS Vigilant-X Series

## Quad Screen Graphic Controller For High-End Data & Video Walls Applications

### Vigilant-X

- Four-Port graphics adapter
- Four-Delta Chrome GPU's each with 32Mb DDR 250MHz frame buffers (Total 128Mb)
- Four-Analog VGA outputs up to 2048 x 1536 □ Four-DVI outputs up to 2048 x 1536
- Four-TV outputs. PAL/NTSC/S-Video, HDTV with high quality flicker filters
- Support for up to sixteen cards providing outputs for up to 64 displays

### Vigilant-Xplus

Has all the features of the Vigilant-X and in addition:

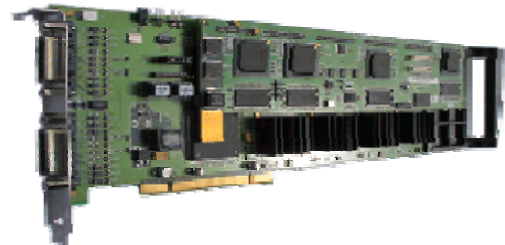
- Four high quality video overlays, each at 720 x 576 resolution (one overlay per channel)
- Four PAL/NTSC/SECAM decoders for either Composite or S-Video
- Four high quality de-interlaced video overlays with triple buffering
- In built 16 x 8 video matrix switch supporting sixteen composite or 8 S-video inputs

The Vigilant-Xplus video overlays provide one overlay window per display channel. The overlays can be positioned and sized anywhere across the multi-screen display. The restriction is that no more than one overlay may be displayed on the same screen. Vigilant-Xplus is used in conjunction with the Video Input Module (VIM) for inputting video sources. Various VIM's are available and support up to 128 video inputs. Each overlay window can select anyone of the available inputs for display.

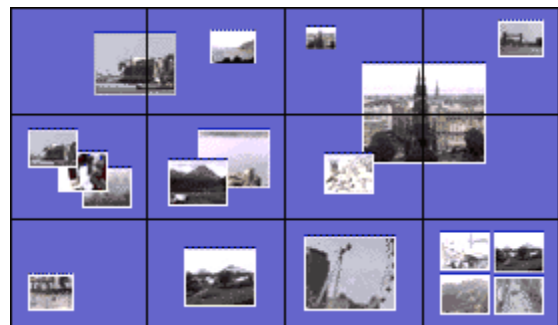
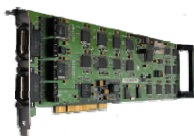
### Vigilant-XSQ

Has all the features of the Vigilant-X and in addition:

- Four SIP video processors each with 64Mb of overlay memory (total 256Mb)
- High speed 5Gb/s SIP digital video input port for Avant-SQ16 and Avant-8HQ supporting up to 128 video channels
- Sixteen video overlay windows per display channel (sixty-four in total)
- Four 1280 x 1024 high resolution video overlays



Note: The Vigilant-XSQ requires the Avant-SQ16 video overlay card.



# EMS Vigilant-X Series

## Quad Screen Graphic Controller For High-End Data & Video Walls Applications

### Software

All EMS Vigilant cards are supplied with the following software:

EMS multi-screen display drivers for Windows® 2000, Windows® XP and Windows Vista. The display driver presents one large desktop to Windows® and will support up to 32 screens.

EMS Wall Control Software "VigiControl". VigiControl displays the entire wall layout in its local application window. The position and size of each window on the video wall is displayed in the VigiControl application window. The user can interactively move and size the application windows. The user interface may be displayed on a network connected Windows PC as well as on the display wall itself or even on an extra control screen connected to the PC system. The number of networked operators is not restricted by VigiControl.



Video/Data Wall



Network PC running  
VigiControl Software

VigiControl, also controls Video Overlay (only on Vigilant-Plus or Vigilant-Pro), Avant overlay cards (requires the Vigilant\_Pro), PhynxRGB VGA/RGB capture window properties. Control of VxSwitch (video matrix switch) cards in standalone mode and control standard Windows application programs.

VigiControl can also configure the 'gaps' between the screens and for projectors it is possible to overlap screens for one large seamless video screen.

*\*\*Note: free version does not save video wall layouts or have network operation.*

The VigiControl wall controller is available in three versions:

- VigiControl - Free version.
- VigiControl-PRO-SK - Licensed version with a software key code.
- VigiControl-PRO-HK - Licensed version with a hardware USB key (dongle).

To purchase the full versions of VigiControl contact our sales department at: [sales@emsdigital.co.uk](mailto:sales@emsdigital.co.uk)

# EMS Vigilant-X Series

## Quad Screen Graphic Controller For High-End Data & Video Walls Applications

### Vigilant-X Specification

Card Format	32bit 66Mhz PCI adapter
Card Size	105mm x 310mm Full size
Number of output channels	4
Max Analog output resolution per channel	2048 x 1536 x 60Hz
Max DVI output resolution per channel	1600 x 1200 x 60Hz or 2048 x 1536 x 35Hz
TV output formats	NTSC. PAL, S-video, HDTV
Max No of cards per system	Up to 16 cards (64 display channels)
Power consumption	25 watts
Power requirements	+5V @ 4A, +3.3V @ 1.5A
Operating temperature	0 to 35 Deg C ambient
Storage temperature	-20 to +70 Deg C
Relative humidity	5% to 90% non-condensing

### Vigilant-Xplus Specification

Card Format	32bit 66Mhz PCI adapter
Card Size	105mm x 310mm Full size
Number of output channels	4
Max Analog output resolution per channel	2048 x 1536 x 60Hz
Max DVI output resolution per channel	1600 x 1200 x 60Hz or 2048 x 1536 x 35Hz
Max No of overlay windows	One per output channel (4 windows per card)
TV output formats	NTSC. PAL, S-video, HDTV
Max No of cards per system	Up to 16 cards (64 display channels)
Max No of video inputs	128 composite or 64 S-video
Video input formats	NTSC, PAL, SECAM, S-video
Video overlay resolution (max)	720 x 576 (De-interlaced)
Video window update rate	Real time 25/30 frames per sec (PAL/NTSC)
Power consumption	30 watts
Power requirements	+5V @ 5A, +3.3V @ 1.5A
Operating temperature	0 to 35 Deg C ambient
Storage temperature	-20 to +70 Deg C
Relative humidity	5% to 90% non-condensing

# EMS Vigilant-X Series

## Quad Screen Graphic Controller For High-End Data & Video Walls Applications

### Video Input Options for the Vigilant-Xplus:

#### VIM (Video Input Module)

The VIM provides four composite or two S-Video inputs. Use up to four VIM modules to support up to sixteen composite or eight S-Video inputs. The VIM is available with either RCA or BNC input connectors

#### VxSwitch32-H (Matrix Switch)

For systems needing more than sixteen inputs use a single or multiple VxSwitch32-H cards to increase the number of inputs to thirty-two, sixty-four, ninety-six or one hundred and twenty-eight. (one, two, three or four VxSwitch32-H cards) The VxSwitch32-H is supplied with two BNC16-cables or the optional PANEL-16A

### Vigilant-XSQ Specification

Card Format	32bit 66Mhz PCI adapter
Card Size	105mm x 310mm Full size
Number of output channels	4
Max Analog output resolution per channel	2048 x 1536 x 60Hz
Max DVI output resolution per channel	1600 x 1200 x 60Hz or 2048 x 1536 x 35Hz
Max No of overlay windows	One per output channel (4 windows per card)
TV output formats	NTSC, PAL, S-video, HDTV
Max No of cards per system	Up to 16 cards (64 display channels)
Max No of video inputs	128 composite or 64 S-video
Video input formats	NTSC, PAL, SECAM, S-video
Video overlay resolution (max)	720 x 576 (De-interlaced)
Video window update rate	Real time 25/30 frames per sec (PAL/NTSC)
Power consumption	30 watts
Power requirements	+5V @ 5A, +3.3V @ 1.5A
Operating temperature	0 to 35 Deg C ambient
Storage temperature	-20 to +70 Deg C
Relative humidity	5% to 90% non-condensing

For any further information or details, please contact our sales department.

Email: [sales@emsdigital.co.uk](mailto:sales@emsdigital.co.uk)

