

Xtreme4vs

Dual/Single-Link Video Wall Controller

Introducing the new Xtreme4vs

Dual/Single-Link DVI (*HDMI) Video Display Wall Controller Stand-alone unit



The Xtreme4vs is a stand alone display wall controller that accepts a single or dual-link DVI input and can flexibly display this across four output monitors.

Each output can be driven as DVI or analog RGB and can represent an arbitrary crop region of the original input image. The output resolution and frame rate does not need to be related to that of the input as the Xtreme4vs will optionally upscale and frame rate convert each cropped region independently. Additionally, each output can be independently mirrored or rotated through 90°, 180° or 270° to support creative mixes of landscape and portrait monitors.

- Supports full bezel width and height correction for all types of displays.
- Ideal for use with edge blending projectors - supports image overlapping.
- Splits a single DVI input into four independent monitor outputs.
- Accepts Dual Link DVI, Single Link DVI or HDMI* input. (*HDMI input requires the optional DVI/HDMI Adapter.)
- The input EDID is programmable to allow arbitrary input resolutions and frame rates.
- Flexibly drives four displays, each from any selected region of the input image.
- Supports both DVI and analog RGB output monitors.
- Stand alone operation supports auto-detecting of input resolution and output monitor native resolutions. Output screen configuration is defined by internal non-volatile memory.
- Output configuration is programmable via a USB connection to a PC. Graphical utility allows easy control of cropping, scaling, rotation and gaps.
- Multiple units can be used for larger wall configurations.

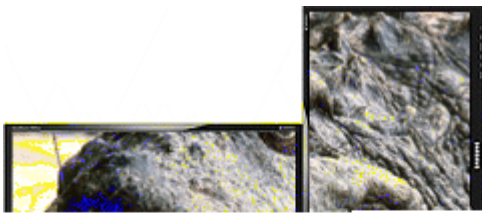
Xtreme4vs

Dual/Single-Link Video Wall Controller

Features

Supports creative monitor arrangements

Each output monitor can take its input from any region of the input DVI image, since all the required cropping, scaling, rotation and frame-rate conversion is handled by the Xtreme4vs hardware. These regions can overlap to allow any output to replicate another, or they can be configured to support any creative splice of the source material. This allows the support of many non-rectangular screen arrangements with uneven gaps, and any mix of monitor orientations.



Crop the input signal into x4 and display x2 quarters landscape and x2 quarters portrait.



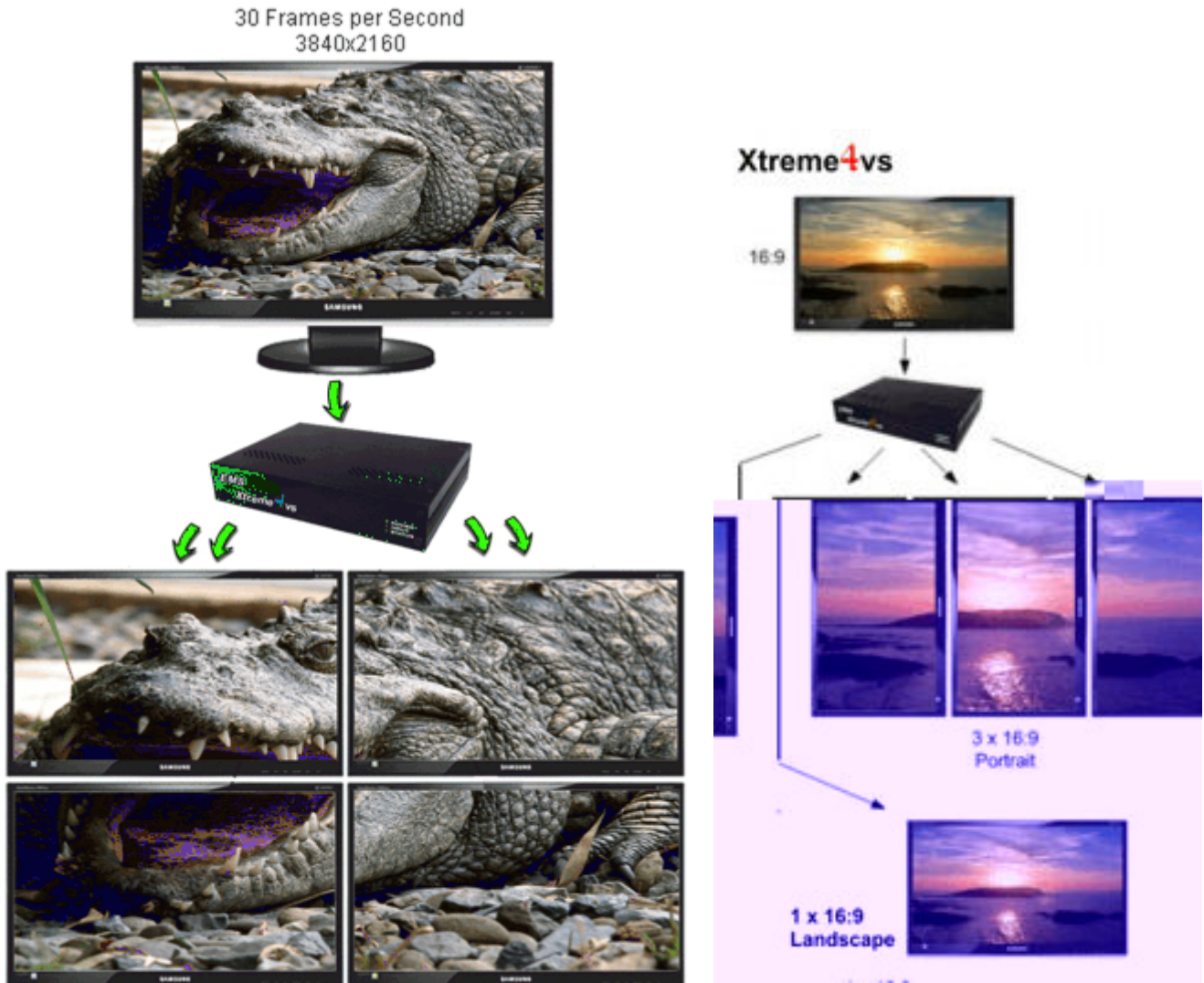
Crop the input signal x4 rotate through 90°, 180° or 270°, display in landscape and portrait.

Dual-Link DVI input supports high resolutions

Dual-Link DVI input will support high resolution pixel-perfect source images for display. The EMS Xtreme4vs can additionally present a default native resolution to the source to allow still higher custom resolutions at reduced frame rate, but still remain within the capabilities of the Dual-Link interface. Most standard graphics card sources will output at this native resolution. Since the Xtreme4vs will scale and frame-rate convert, using a triple-buffered capture architecture, the output monitors can still be driven at their preferred frame rates and resolutions.

Xtreme4vs

Dual/Single-Link Video Wall Controller



Easily Configurable

The Xtreme4vs supports simple editing of custom input and output configurations via a USB connection to a PC. Once configured, the Xtreme4vs will run stand-alone, without the need for the USB connection, and will auto detect input resolutions and adjust internal scaling appropriately to drive the output monitors in a consistent manner.

Gen-Lock

The Xtreme4vs will auto-sense input and output framerates and automatically genlock when possible. Four identical monitors will automatically be driven genlocked and if the input timings match they are additionally genlocked and clock-locked to the source signal.

Xtreme4vs

Dual/Single-Link Video Wall Controller



Other possible screen configurations



Xtreme4vs

Technical Specifications

Physical Dimensions	235 x175 x 44mm / 9.25" x 6.9" x 1.75"
Operating Temperature Range	0 - 35 DegC / 32 - 96 DegF
Power Requirements	5V DC, 11W. Universal mains power adapter supplied (100-240V).
Cooling	Cooling by internal fan. The input/output vents should not be restricted.
1x Dual link DVI capture	To 330Mpixels/s.
Input Surface	4k x 4k maximum
4x Single link DVI or analog RGB outputs	To 165Mpixels/s.
Output Screens Resolutions	Up to 2.5Mpixel (maximum 2048 pixels in either direction)
Arbitrary Up Scaling	64x original surface area
Software Control	Supports configuration and updates via USB port (USB 2.0)

For details on how to purchase the Xtreme4vs products contact our sales department sales@multiscreenvideo.com